

# LBMA-i

The first dataset providing investors with the most comprehensive view of the precious metals market

LBMA-i is a simplified and cost-effective reporting service covering precious metals trading. The data feed collates the daily trade volumes from LBMA members to form an anonymized and aggregated dataset which allows market participants to gauge the size and shape of the precious metals market. Formed to meet LBMA's growing demand for a trade reporting service that improves transparency and demonstrates liquidity in the global OTC precious metals market, LBMA-i is the only dataset available for OTC precious metals.

## Coverage includes trade volumes on gold, silver, platinum and palladium

- Daily reporting covers gold, silver, platinum and palladium traded and open volume on a T+1 basis
- Weekly reporting covers the previous week of gold, silver, platinum and palladium traded and open volume
- All data sorted by asset class, including spot, swap/forward, options and lease loan deposits

## More Information

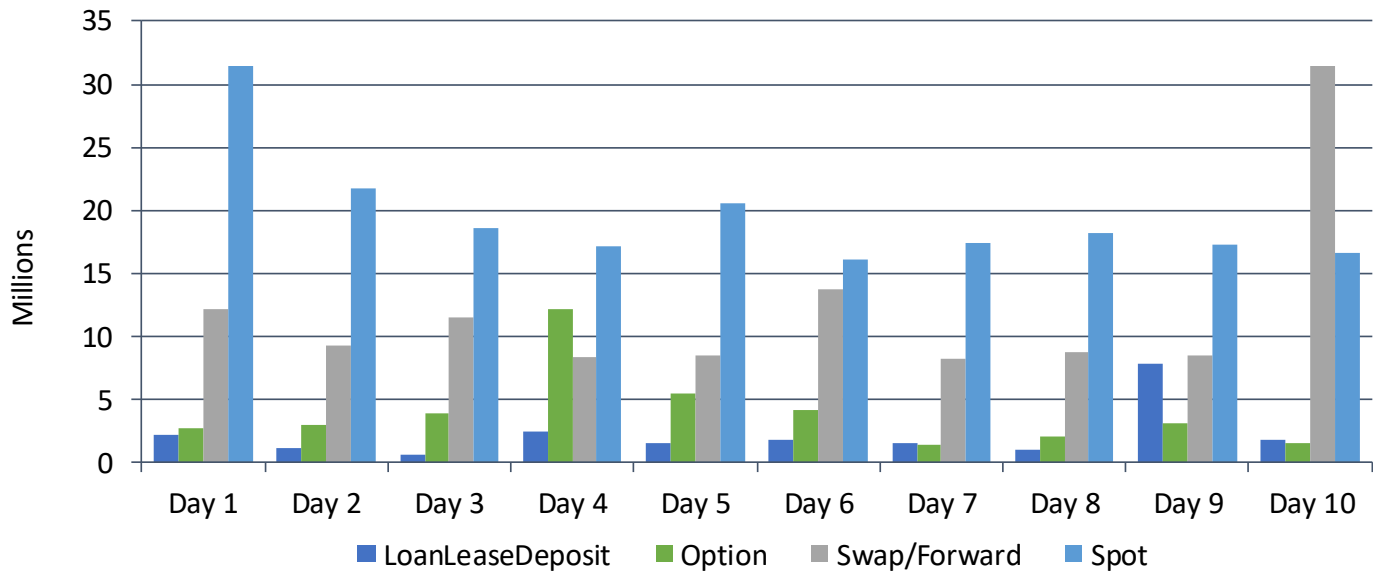
[dataeurope@nasdaq.com](mailto:dataeurope@nasdaq.com)

[lbma-i@nasdaq.com](mailto:lbma-i@nasdaq.com)

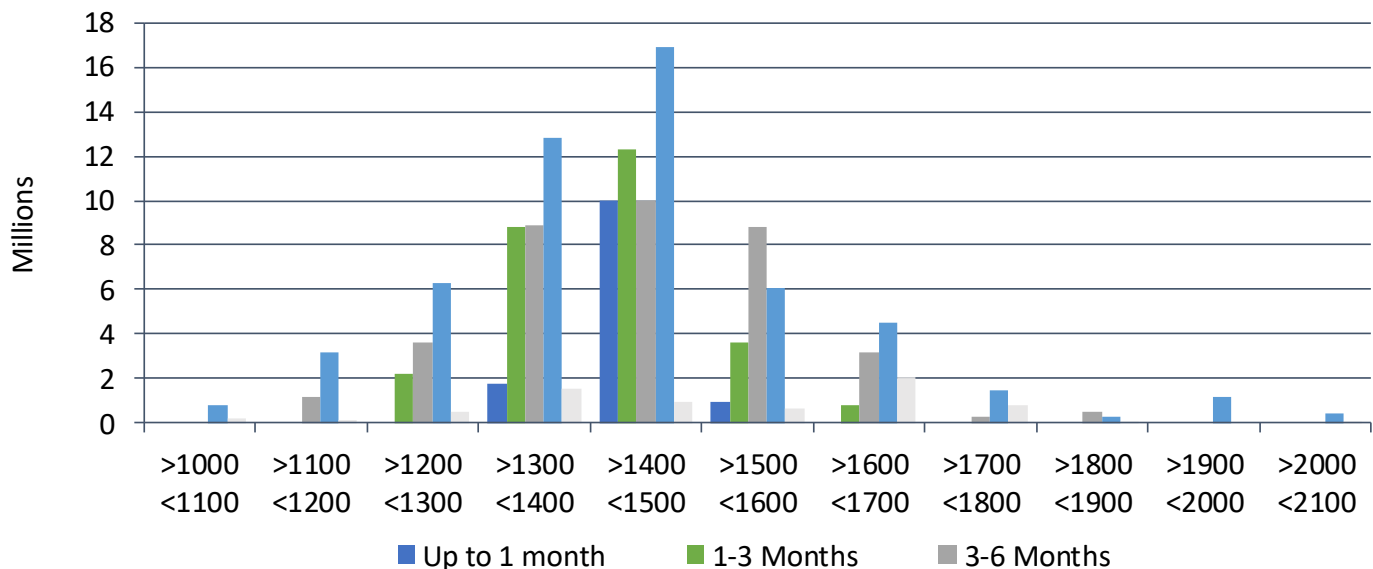
## Reports Available

Product	Instruments	Metals	Description
<i>Open Volume by tenor in troy ounces</i>	Forwards and Swaps Lease Loan Options	XAU, XAG, XPT, XPD	T +1 daily volume by tenor of all trades yet to settle in troy ounces. Tenors: 1 and 2 weeks, 1, 3, 6, 9 and 12 months, and +1 year. Deferrals applied.
<i>Total Volume by tenor in troy ounces</i>	Spot Forwards and Swaps Lease Loan Options	XAU, XAG, XPT, XPD	T+ 1 daily volume by tenor. Tenors: 1 and 2 weeks, 1, 3, 6, 9 and 12 months, and +1 year. Deferrals applied.
<i>Vanilla Options Volume</i>	Options	XAU, XAG, XPT, XPD	Open and Total volume grouped by strikes and time to exercise buckets. Deferrals applied.
<i>VIPT (Volume in Price Tranches)</i>	Spot	XAU, XAG, XPT, XPD	T+ 1 spot volume. Volumes are displayed as tranches at percentage price increments up and down the LBMA's T+1 benchmark price.

## LBMA-i Daily Trade Data



## LBMA-i Options Strike Vol (toz)



## How to Access

- Online landing page: [www.lbma-i.com](http://www.lbma-i.com)
- Nasdaq FDS (File Delivery Service)
- Nasdaq GCF (Genium Consolidated Feed)
- Market Data vendor terminals

Nasdaq® is a registered trademark of Nasdaq, Inc. The information contained above is provided for informational and educational purposes only, and nothing contained herein should be construed as investment advice, either on behalf of a particular security or an overall investment strategy. Neither Nasdaq, Inc. nor any of its affiliates makes any recommendation to buy or sell any security or any representation about the financial condition of any company. Statements regarding Nasdaq-listed companies or Nasdaq proprietary indexes are not guarantees of future performance. Actual results may differ materially from those expressed or implied. Past performance is not indicative of future results. Investors should undertake their own due diligence and carefully evaluate companies before investing. **ADVICE FROM A SECURITIES PROFESSIONAL IS STRONGLY ADVISED.** © Copyright 2019. All rights reserved. Nasdaq is a registered trademark of Nasdaq, Inc.